

DPR-120

DP Reference Sink

with

Debug and Test

Controller GUI



USER MANUAL

Copyright

This manual, Copyright © 2016 Unigraf Oy. All rights reserved

Reproduction of this manual in whole or in part without a written permission of Unigraf Oy is prohibited.

Notice

The information given in this manual is verified in the correctness on the date of issue. The authors reserve the rights to make any changes to this product and to revise the information about the products contained in this manual without an obligation to notify any persons about such revisions or changes.

Edition

DPR-120 User Manual, Version 15

Document identifier: KH5912

Date: 8 June 2016

Company Information

Unigraf Oy

Piispantilankuja 4
FI-02240 ESPOO
Finland

Tel. +358 9 859 550

<mailto:info@unigraf.fi>

<http://www.unigraf.fi>

Trademarks

Unigraf, DPR and DTC are trademarks of Unigraf Oy.

DisplayPort™ is a trademark of VESA.

HDCP is a trademark of Digital Content Protection LLC.

Windows® 8, Windows® 7 and Windows® XP are trademarks of Microsoft Inc.

All other trademarks are properties of their respective owners.

Limited Warranty

Unigraf warrants its hardware products to be free from defects in workmanship and materials, under normal use and service, for twelve (12) months from the date of purchase from Unigraf or its authorized dealer.

If the product proves defective within the warranty period, Unigraf will provide repair or replacement of the product. Unigraf shall have the whole discretion whether to repair or replace, and replacement product may be new or reconditioned. Replacement product shall be of equivalent or better specifications, relative to the defective product, but need not to be identical. Any product or part repaired by Unigraf pursuant to this warranty shall have a warranty period of not less than 90 days, from the date of such repair, irrespective of any earlier expiration of original warranty period. When Unigraf provides replacement, then the defective product becomes the property of Unigraf.

Warranty service may be obtained by contacting Unigraf within the warranty period. Unigraf will provide instructions for returning the defective product.

CE Mark

DPR-120 meets the essential health and safety requirements, is in conformity with and the CE marking has been applied according to the relevant EU Directives using the relevant section of the corresponding standards and other normative documents.

Table of Contents

1.	About This Manual	5
	Purpose.....	5
	Product Version.....	5
	Notes.....	5
2.	Introduction	6
	Product Description.....	6
	Functionality in a Nutshell	6
	SST and MST Modes.....	7
	Monitor Out Port.....	8
	DPR-120 Hardware Features.....	9
3.	Installation.....	10
	Unpacking	10
	Contents of the Installation CD.....	10
	Software Installation.....	10
	Firmware Update.....	11
	License Keys.....	11
4.	Debug and Test Controller GUI.....	13
	DP Input Group	13
	Main Link Tab.....	13
	Bottom Panel.....	15
	E-EDID Tab	16
	MSA Log Tab.....	19
	CRC Log Tab.....	20
	DPCD Tab	21
	AUX Tab	23
	Terminal	24
	Source DUT Testing.....	25
5.	AUX Channel Monitor	26
	The AUX Tab.....	26
	Decoding the Data.....	26
	Inspecting the Acquired Data	27
	Data Lines	27
	Columns	27
	Message Details	28
	Selecting Columns in the Transaction List.....	28
	Selecting Font and Colors of the Transaction List	29
	Coloring DPCD Address Ranges.....	29
	Searching for Data in the Transaction List.....	30
	Filtering Data in the Transaction List	31
	Saving Recorded Data	32
6.	Running Compliance Tests	34
	DUT Capabilities.....	34
	Running CTS Tests	35
	Evaluating CTS Test Results.....	36
	Creating a CTS Test Report	37
	Viewing the CTS Test Report	37
	Appendix A. Product Specification.....	38
	Appendix B: Test Automation Shell	39

1. ABOUT THIS MANUAL

Purpose

This guide is the User Manual of DPR-120 Reference Sink and DTC, Debug and Test Controller GUI for use in a PC with Windows® 8, Windows® 7 or Windows® XP operating system.

The purpose of this guide is to

- Give an overview of the product and its features.
- Give instruction for the user on how to install the software and the drivers.
- Introduce the HW features of the DPR-120 unit.
- Give instructions for the user how use the DTC GUI.

Product Version

This manual explains features found in **Debug and Test Controller GUI, DPR-120 DTC version 1.11**. Please consult Unigraf for differences between versions.

Please consult the Release Notes document in the installation folder for details of the SW and FW versions and changes to previous releases.

Notes

On certain sections of the manual, when important information or notification is given, text is formatted as follows. Please read these notes carefully.

Note	This text is an important note
------	--------------------------------

2. INTRODUCTION

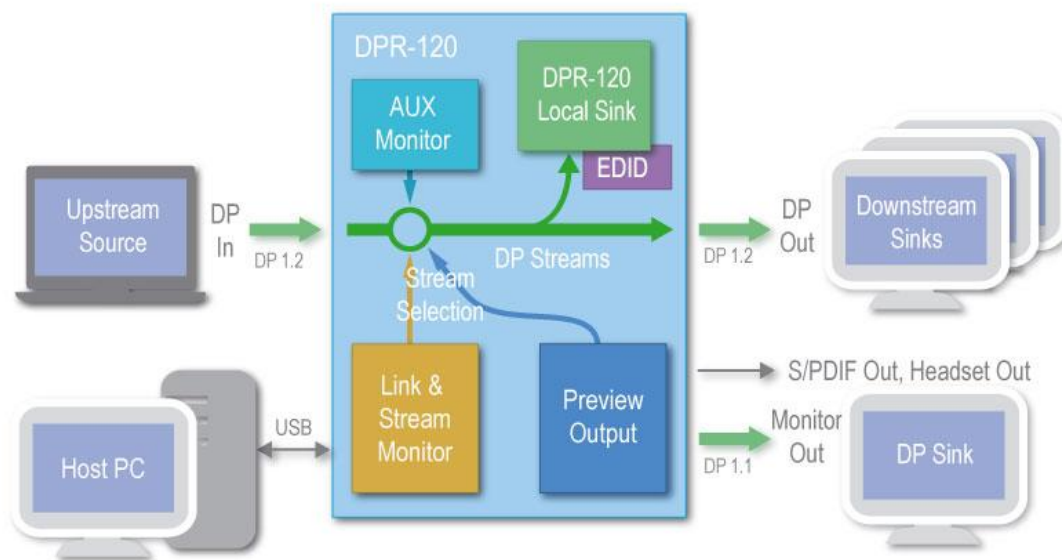
Product Description

DPR-120 is a High Bit Rate 2 (HBR2) and Multi Streaming (MST) capable Reference Sink and branch device. Debug and Test Controller GUI (DTC) is a graphical user interface for DPR-120. Test Automation Shell and its API are an optional interface for automated testing.

- DP 1.2 compliant Reference Sink and Branch device
- Is able to recognize and monitor up to 4 DisplayPort Streams
- Local Sink functionality with DP 1.1 compliant monitor output
- Debug and Test Controller GUI with stream status monitoring and EDID and DPCD read write and edit functionalities.

Functionality in a Nutshell

DPR-120 is a MST and HBR2 compatible DisplayPort Reference Sink and a configurable Display Port Sink and Branch Device. The GUI allows the user to configure the features of the Sink in order to test his Source or Sink DUT in different configuration scenarios.



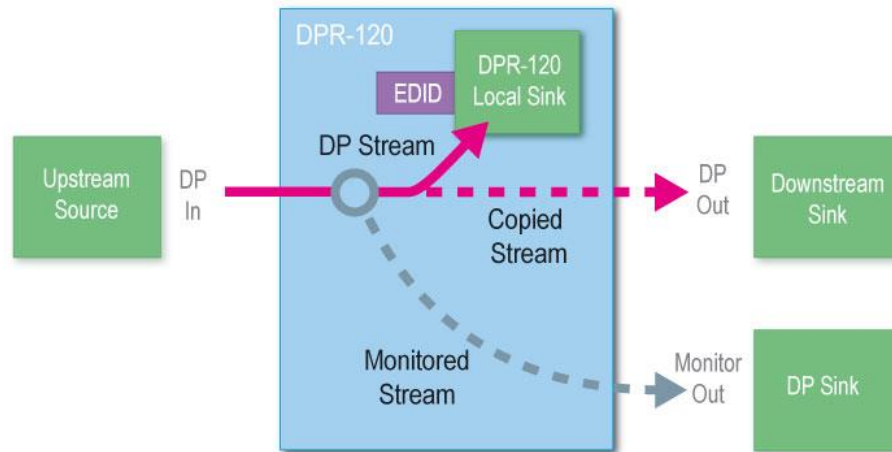
Note	Please note that Monitor Out port is DP 1.1a compliant. E.g. its maximum video mode is 2560x1600p60 (RB).
------	---

Note	In the current release Monitor Out link is not HDCP compliant. If the monitored stream is HDCP encrypted, it will not be displayed on Monitor Out port.
------	---

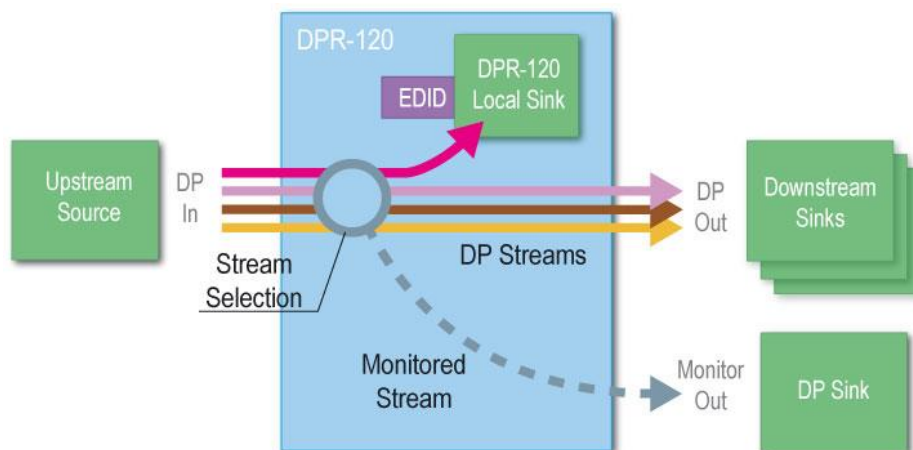
SST and MST Modes

DPR-120 can operate either in Single stream (SST) mode or Multi stream (MST) mode. The selection is done with the **MST Capable** check box in *Main Link* tab in *DP Input* Group. Please find the description in Chapter 4 below.

In Single stream mode DPR-120 is seen as a single Local Sink. The local EDID and DPCD registers define its capabilities for the upstream source. The received stream for the Local sink is copied to **DP Out** port and also in the **Monitored Stream**.



In Multi stream mode, i.e. when **MST Capable** check box is selected in the GUI, DPR-120 is seen as a Multi-stream capable DP Sink. The received streams are forwarded according to the intent of the Upstream Source. In normal case one of the streams is for the *DPR-120 Local Sink* but this is not necessary the case. All four possible streams can be forwarded to downstream sinks as well.



Based on the **Stream Selection** on the *Main Link* tab in *DP Input* Group one of the input streams is selected for monitoring. The details of the stream is shown in the status fields of the Debug and Test Controller GUI and the stream is also forwarded to the *Monitor Out* port.

Monitor Out Port

Monitor Out is a DP 1.1a compliant display output for monitoring the stream selected on the *Main Link* tab in *DP Input* Group. *Monitor Out* port does not support HDCP.

A copy of the monitored stream is fed to *Monitor Out* unscaled, as received. DPR-120 assumes that the monitor connected to the *Monitor Out* is able to support the stream.

Note:	Please note that <i>Monitor Out</i> port is limited to DP 1.1 capability (2560 x 1600 p60 (RB) resolution) only.
-------	--

Note:	Please note that <i>Monitor Out</i> port is not detecting the display capabilities of the connected monitor. The stream selected on the <i>Main Link</i> tab in <i>DP Input</i> Group is output unchanged.
-------	--

Note	Please note that <i>Monitor Out</i> does not support HDCP. An HDCP encrypted input video stream will not be output to this port.
------	--

DPR-120 Hardware Features

The image below describes the connections and controls of DPR-120 and their description



Name	Description
DP In	DisplayPort input from the upstream Source
DP Out	DisplayPort output to the downstream Sink
Monitor Out	Copy of the monitored DisplayPort stream.
Headset Out	Analog audio output. (Currently not in use)
S/PDIF In	Optical audio input. (Currently not in use)
S/PDIF Out	Optical audio output. Audio embedded in the monitored stream.
Power In	+5 Vdc Power Supply Input
USB	USB connection to the host PC
Reset	Pushbutton to reset the unit
Status LEDs	Status 1: HDCP Status Off = disabled On = enabled Status 2: Monitor Out Status 3: DP Out Status 4: DP In Off = Cable disconnected, Blinking = Cable connected but no link, On = Link training successful.
TSYNC In	Synchronizing input. TBD
TSYNC Out	Synchronizing output. TBD

3. INSTALLATION

Unpacking

The DPR-120 product shipment contains

- The DPR-120 unit
- AC/DC Power supply (100 to 240 Vac 50/60 Hz input, +5 Vdc output)
- USB cable
- The Utilities CD containing the SW installer. An electronic copy of this User Manual is included.

Contents of the Installation CD

The DPT-120 Installation CD contains DPR-120 Setup utility including the following items:

- Windows drivers (installed during set up)
- DPT-120 firmware matching the SW version included (embedded in the GUI application, automatically updated when GUI run)
- DPR-120 Debug and Test Controller software GUI (installed during set up)
- DPR-120 Test Automation Shell (optionally installed during set up)
- User Manuals including this document.

Note:	Please install the software before connecting the DPR-120 in your PC.
-------	---

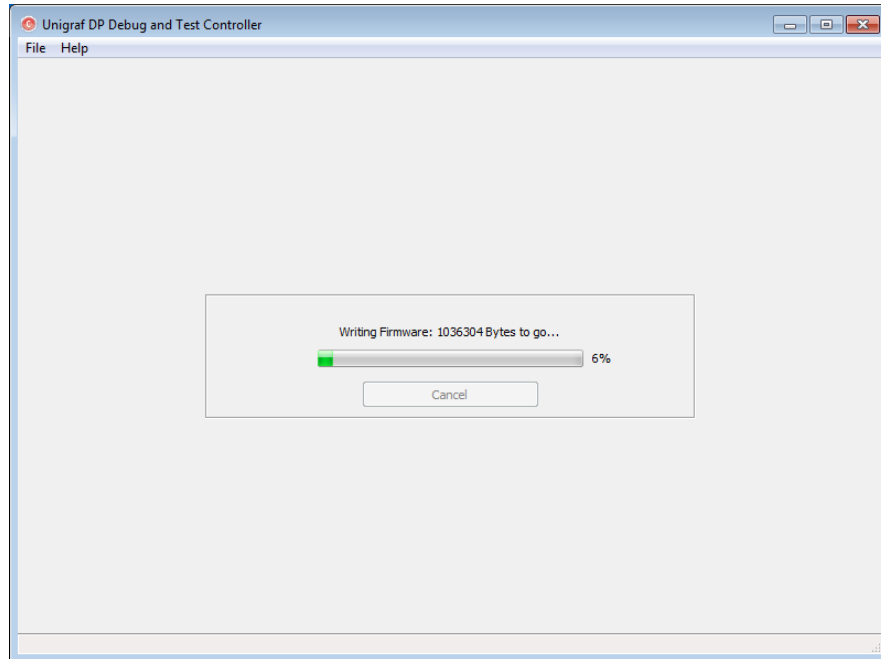
Note:	System administrator's privileges are required for performing the installation.
-------	---

Software Installation

- ▶ Start the installation by running **DPR-120 Setup.exe**
Once the installer has started a welcome page is displayed. The welcome page shows the software package release version.
- ▶ Click **Next** to continue. In the next dialogs you will be able to define which software components are installed.
 - A fresh version of the *DPR-120 DTC Application*
 - Optionally the *Device Drivers*.The next two dialogs will allow you to define the install folder in your PC and the Start Menu folder used.
- ▶ When you are ready with the selections, click **Install** to start the installation.
- ▶ Click **Finish** to exit installation.

Firmware Update

The DPR-120 firmware matching with the DP DTC GUI SW is embedded in the GUI application code itself. When DP DTC application is launched the firmware version programmed in the hardware is automatically checked and updated if needed.



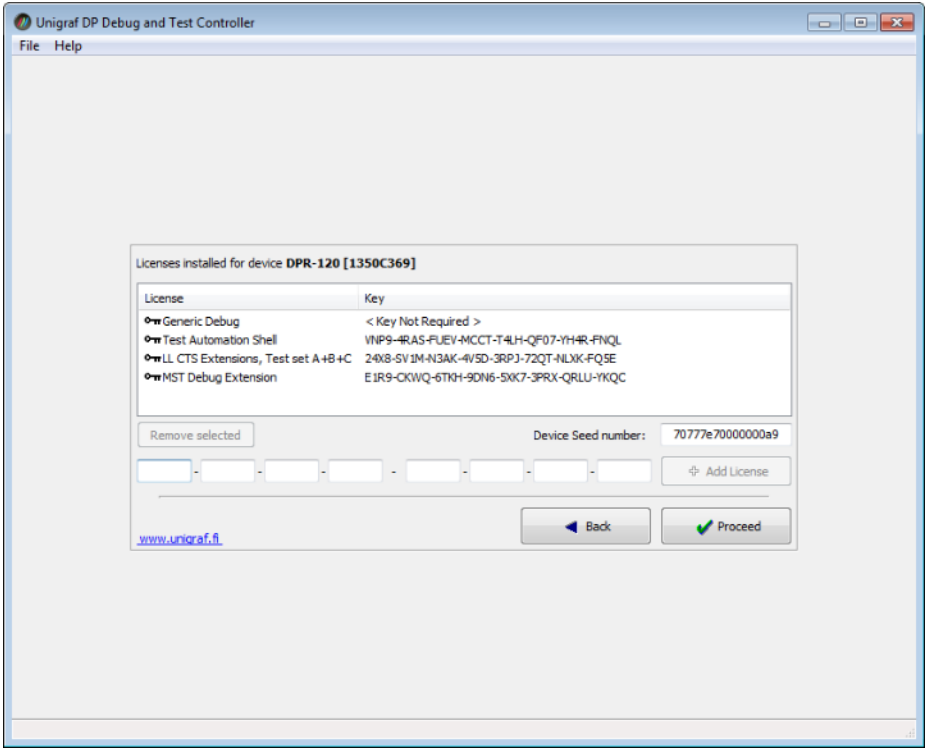
License Keys

For some feature of the DPR-120 you will need a hardware specific license key. Each license is valid for one specific device only. By using the GUI you can read the *Seed Number* of your DPR-120 unit. For a given Seed Number, Unigraf will provide you a *License Key* that will enable you to use the GUI from any PC to control your DPR-120.

You can usually find your License Key printed in a sticker that can be: glued on the unit's enclosure, included in the delivery package or among its related documents. If you cannot locate the License Key, please contact Unigraf and provide the Seed Number shown on the dialog in order to receive your License Key.

The Basic Debugging features of the DPR-120 do not require a license keys. When purchasing additional features like Compliance Test Tools and Test Automation Shell, you will be provided the license key matching the new features. The key will enable the corresponding features in the DP DTC GUI.

- ▶ Insert each of the 32 character long License Keys in the field provided and click **Add License**. When you have inserted all licenses, click **Proceed**. The license keys are now saved in your PC and you can constantly use the device from this PC.



Note	Please note that each license is bound to one specific DPR-120 unit. The same license can be used with any number of PCs.
Note	The License Key never includes characters I, G, B, O because of their similarity with the corresponding numbers. If in doubt, please use numbers. You can use copy and paste to insert the License Key.
Note	The DPR-120 unit must be connected to your PC for entering the License Key.

4. DEBUG AND TEST CONTROLLER GUI

Debug and Test Controller GUI (DTC) is the user interface for DPR-120. The various functionalities are divided into groups and tabs providing the user in each tab functions related a certain task or operation. Some of the functions need a license and the related groups are visible in the GUI only when a valid license key has been entered.

The following chapters describe the contents of the DTC and the related functions.

DP Input monitors the status and the functions related to the *DP Input* interface from the upstream Source Device. The user can monitor the streams received by DPR-120. This group is always visible and is not enabled by a license.

Terminal is a tool for running embedded DPR-120 commands.

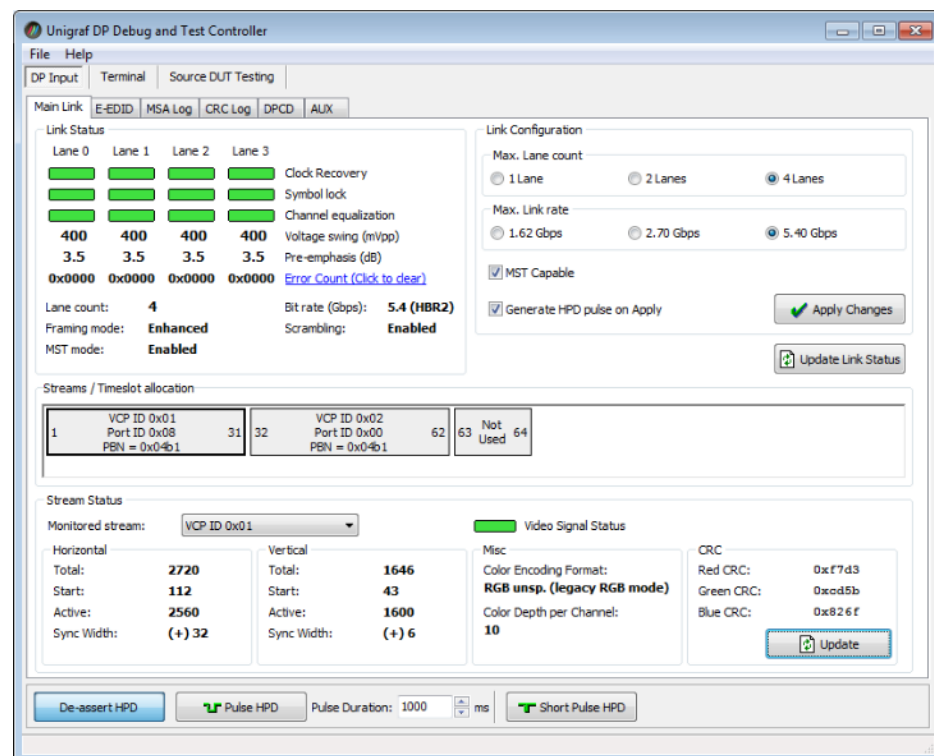
Source DUT Testing is the group for running CTS Tests

DP Input Group

This tab has six tabs, each dedicated to a certain function.

Main Link Tab

Main Link tab contains four panels: *Link Status*, *Link Configuration*, *Stream Status* and optionally *Streams / Timeslot allocation* (enabled with a license).



Link Status

Link Status displays the status of the link training and the link parameters negotiated between the DPR-120 Sink and the Upstream Source. The data is retrieved from the DPCD registers of the DPR-120 Sink. The status is updated automatically.

Link Configuration

Link Configuration allows the user to change the way the Sink capabilities are announced in the DPCD registers of the DPR-120 Sink. *Maximum Lane Count* and the *Maximum Link Rate* are set with their appropriate radio buttons. For enabling the *Multi Streaming* (MST) support select the **MST Capable** check-box.

To update the new status to the DPCD registers click **Apply Changes**.

To apply a *Hot Plug Detect* pulse automatically after updating the status, select **Generate HPD pulse on Apply**. HPD pulse duration will be defined in the *Bottom Panel*.

Stream / Timeslot Allocation

Streams / Timeslot Allocation panel is enabled with *MST Debug Extension* license key. The panel shows the time slot allocation for the various MST stream payloads in the received upstream link. In case of SST operation, the panel is empty.

Streams / Timeslot allocation					
1	VCP ID 0x01 Port ID 0x08 PBN = 0x04b1	31	32	VCP ID 0x02 Port ID 0x00 PBN = 0x04b1	62
			63	Not Used	64

In the example case above, time slots 1 to 31 have been allocated to VC Payload (VCP, Virtual Channel Payload) 1 and time slots 32 to VC Payload 2. Time slots 63 and 64 are unallocated.

Port number for VC Payload 1 is 0x08 and for VC 2 0x00. The Payload Bandwidth Number for both payloads is 0x04b1.

Stream Status

Video Signal Status information is retrieved from the DPR-120 Local Sink input measurement block. It indicates if valid video is received in the stream.

Note: DPR-120 video signal status is based on the capabilities of the used STDP9320 chip. The chip can only process timings up to 4K30Hz. This LED will not provide any meaningful information for pixel clock timings exceeding 4K30Hz.

Video Timing Details are retrieved from the Main Stream Attributes (MSA) of the monitored stream.

Note: Please note that the MSA information used for *Video Timing Details* is provided by the Upstream Source, it is not measured by the DPR-120 Local Sink.

The 16-bit CRC values of the three color components calculated by the Sink hardware. To re-read, click **Update**.

Bottom Panel

The bottom panel of the dialog is shown in all tabs of the *DP Input* group. It includes the controls for the Hot Plug Detect (HPD) signal.

To apply a HPD Pulse with programmable duration click **Pulse HPD**. The duration will be defined in the provided field.

For applying a short pulse click **Short Pulse HPD**. Pulse duration is 1 ms.

Clicking the **De-assert HPD** button will cause HPD line be set to low (de-asserted) and hence no HPD pulse can be generated while HPD line set to low. Click the **Assert HPD** to re-activate (assert) the HPD line.

The screenshot displays the 'Bottom Panel' of the UNIGRAF GUI. It features a table of timing parameters, a color encoding section, and a row of HPD control buttons.

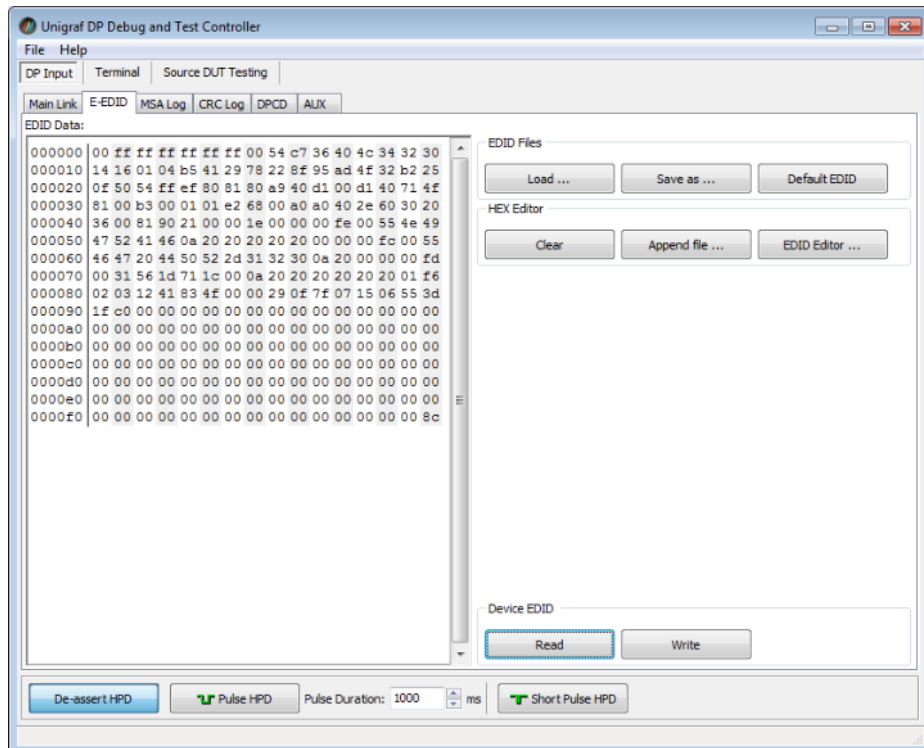
Total:	2720	Total:	1646	Color Encoding Format:	Red CRC:	0x6be8
Start:	112	Start:	43	RGB unsp. (legacy RGB mode)	Green CRC:	0xc0fa
Active:	2560	Active:	1600	Color Depth per Channel:	Blue CRC:	0xe1c7
Sync Width:	(+) 32	Sync Width:	(+) 6	10		

Below the table is an 'Update' button with a refresh icon. At the bottom, there is a row of buttons: 'Assert HPD', 'Pulse HPD', a 'Pulse Duration' field set to '1000' with a unit dropdown set to 'ms', and 'Short Pulse HPD'.

E-EDID Tab

This tab provides tools for accessing the EDID of the DPR-120 Local Sink presented to the Upstream Source Device. There are three basic functions:

- Load and save EDID data files in the host PC
- Edit the EDID contents
- Program and read the contents of the hardware EDID memory



EDID Files

With **Load...** and **Save as...** you can read and write a hex EDID file from your PC. Please note that the program does not alter the contents of the EDID file or verify its integrity during load and save operation.

Note	Currently the EDID Editor does not support Display ID. You can however modify hex EDID files with the HEX Editor or load and program externally generated hex EDID files that have Display ID content.
------	--

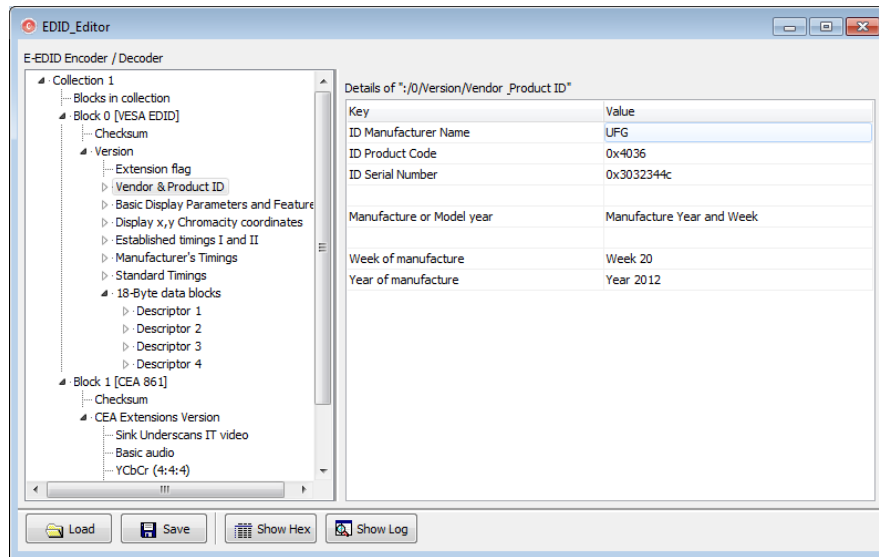
HEX Editor

When EDID content is either loaded from a file or read from the hardware EDID memory, it is shown in the *EDID Data* panel on the left hand side of the dialog. You can edit the EDID contents by typing over the existing values. The altered content is highlighted with **RED**. Please note that Hex Editor itself does not alter the contents of the EDID data or verify its integrity.

Once you are done with editing the data, you can either save it to an *.ecd file in your PC with **Save as...** or program it to the hardware EDID memory with **Write**.

EDID Editor

You can edit the EDID structures of the data in the *HEX Editor* by clicking **EDID Editor**. EDID Editor is launched in a separate pop-up window.



The Main Window

The *EDID Editor* main window is divided into three logical areas. The bottom part of the window contains the command buttons, and the log view. The top-left portion shows the currently edited E-EDID blocks in a tree-form, and the top-right portion shows an edit control for the currently selected item, possibly a list of sub-keys and their names (The list is not shown for all values) and the HEX-view of the block collection.

Command Buttons

Load: Load an EDID block collection file from disk.

Save: Save the current block collection to a disk file.

Show Hex: Show or Hide the HEX view.

Show Log: Show or Hide the Log view.

EDID Editor Features

The EDID Editor currently supports VESA E-EDID block versions 1.3 and 1.4. As the standard defines, the versions 1.0, 1.1 and 1.2 are supposed to be backward compatible, and therefore the VESA E-EDID decoder will also show their contents. However, in these cases it should be noted that the error checking is not compliant with restrictions given in these older versions of the standard. In addition to VESA E-EDID block, the CEA-861 versions 1, 2 and 3 EDID blocks are also fully supported as well as the VESA Block Map Extension blocks.

Practically unlimited number of extension blocks may exist in a single collection. The number of blocks is limited by VESA Specifications and possibly by available system resources. Most EDID blocks contain a structure that is very similar to a tree-structure. The EDID Editor decodes each block into a tree-view of the block. The tree-view then contains all values contained within the EDID block. The contents can then be easily browsed, using only a few mouse clicks. The EDID Editor has a support for automatic variables, such as the block checksum. When the user changes a value in an EDID block, the tool will update the checksum accordingly. The automatic variables appear as read only values for the user. A log print will be made when an automatic variable is updated by the editor.

HEX View: An optional HEX data display of all blocks in the collection. The view also shows the latest changes highlighted.

LOG View: An optional LOG view, which will contain log prints generated by the editor. Mostly it will list values that have been automatically updated due to edits.

Editing tips

Editing an EDID block is very straightforward, but there are some special cases where the user must know how to accomplish certain types of tasks.

- **Enter** key will apply text-edit values and combo-box selection.
- To apply new setting to *binary* values (ones that show a check-box), please click the **Set** button.
- When you see a **Quick Config** button appear below an editor, you can access a configuration menu that allows you to quickly select one of multiple pre-defined setup options.
- In CEA-861 blocks, you can add and remove 18-byte descriptors and CEA data blocks by setting the values “18-byte Descriptors in this block” and “CEA Data block count”. Unfortunately re-arranging the descriptors and CEA data blocks is not supported yet, so you need to be careful when editing these.
- Enter hex values with prefix “0x” or “\$”, no prefix means a decimal value.
- You can always enter HEX or DEC, even if the value is presented as HEX, and/or value range is given in HEX.
- Floating point values must be given with period “.” as decimal separator, even if your localization setting defines decimal separator as comma (or other).
- Remember to click **Set** after changing a bit-value presented as a single check-box if you want the new value applied.

Note	It is recommended that you back up the un-edited EDID contents to a file before editing and writing it to the card.
------	---

Saving EDID Data

When you are done with editing you can either save the EDID contents to a file in the PC or bring it in the *HEX Editor*.

For saving the data to a file in your PC click **Save**.

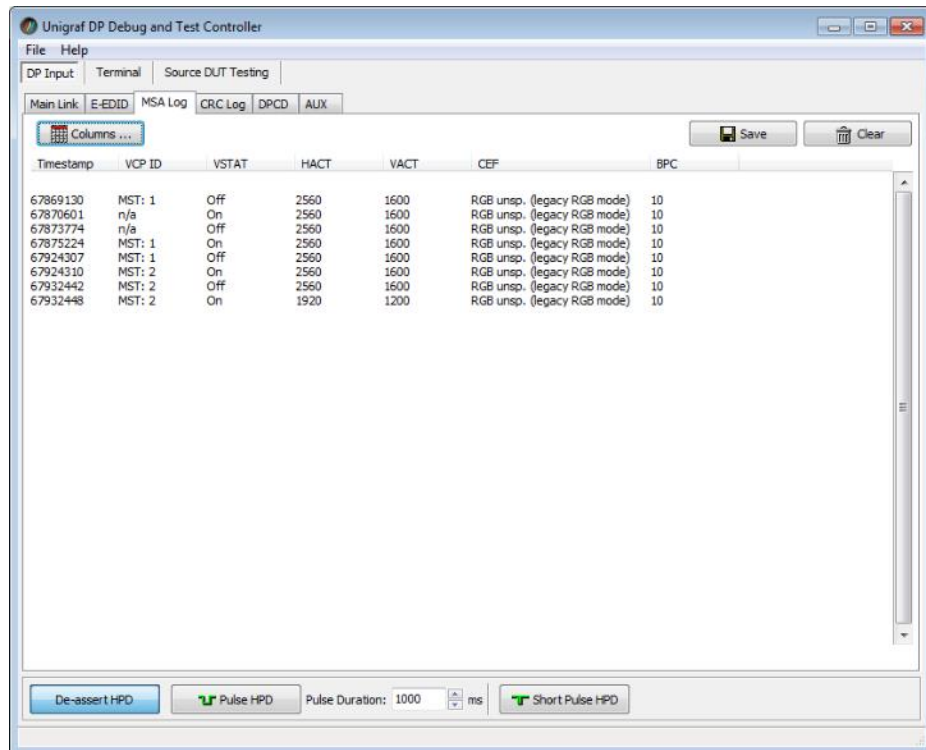
For bringing the data to the HEX Editor close the EDID Editor window by clicking the **Window Close** button in the top right hand corner of the window. You will be asked if you would like to copy and replace the EDID data in the HEX Editor. Click **Yes** to replace the data, click **No** to discard the modifications.

When you are back in the *HEX Editor*, the bytes that the *EDID Editor* changed are highlighted with **BLUE BACKGROUND**.

MSA Log Tab

MSA Log collects video status information from the stream selected in the *Main Stream* tab. The data will be stored since the DTC GUI was launched or **Clear** was clicked.

Click **Columns...** to select which data fields are shown. Please find a list of available fields and their column labels below:



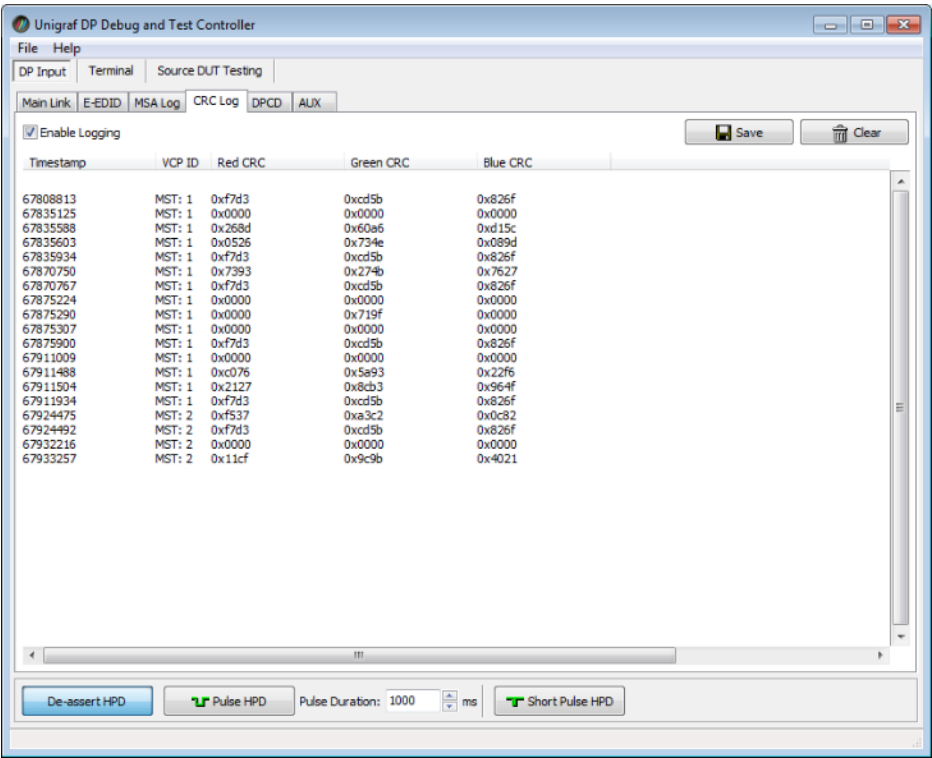
Label	Description	Default
Timestamp	Timestamp in milliseconds from the re-start of the HW	✓
VCP IP	Virtual Channel Payload ID	✓
VSTAT	Video status (On / Off)	✓
HPOL	Horizontal Sync polarity (+/-)	
HTOT	Horizontal Total in pixels	
HS	Horizontal Start in pixels	
HACT	Horizontal Active in pixels	✓
HSW	Horizontal Sync width in pixels	
VPOL	Vertical Sync polarity (+/-)	
VTOT	Vertical Total in lines	
VS	Vertical Start in lines	✓
VACT	Vertical Active in lines	
VSW	Vertical Sync width in lines	
CEF	Color Encoding Format	✓
BPC	Color Depth per Channel	✓

You can save the log in Comma Separated Values (*.csv) format in your PC by clicking **Save**.

Note	When swapping between monitored streams, the first listing, indicating VSTAT=Off is caused by the monitoring circuitry. Please omit this listing.
------	---

CRC Log Tab

CRC Log collects CRC values of the three color components of the received frames from the stream selected In the *Main Stream* tab. The logging is enabled by selecting the **Enable Logging** checkbox.



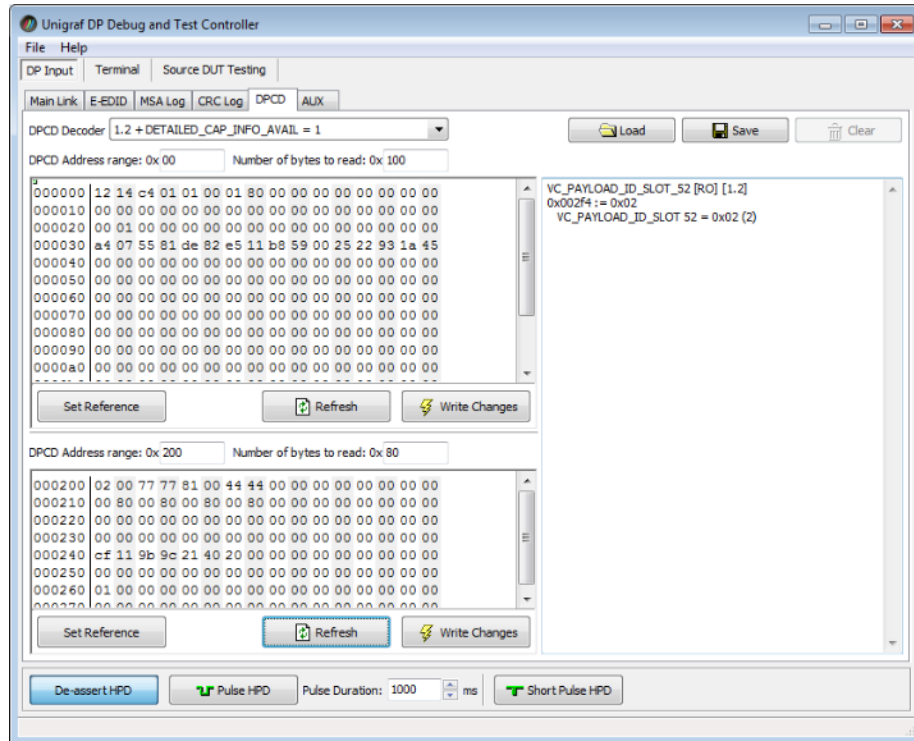
You can save the log in Comma Separated Values (*.csv) format in your PC by clicking **Save**.

DPCD Tab

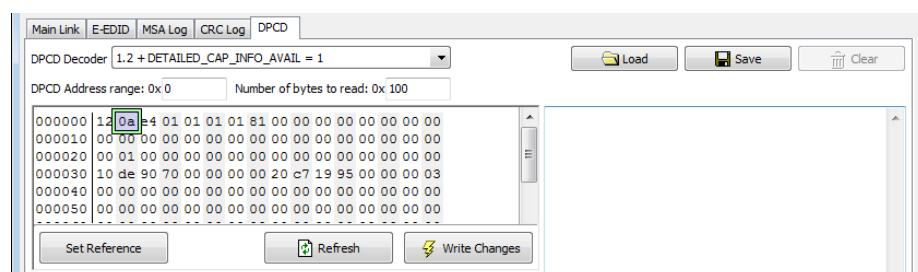
DPCD tab is a tool for monitoring and editing the DPCD registers of the DPR-120 Sink.

The tool consists of two independent monitoring and editing windows for the DPCD data.

The user can freely select the the DPCD address areas shown on each panel.



The *DPCD Decoder* panel on the right hand side shows the interpretation of the DPCD byte selected on the monitoring windows. The selected byte is shown with a green outline.



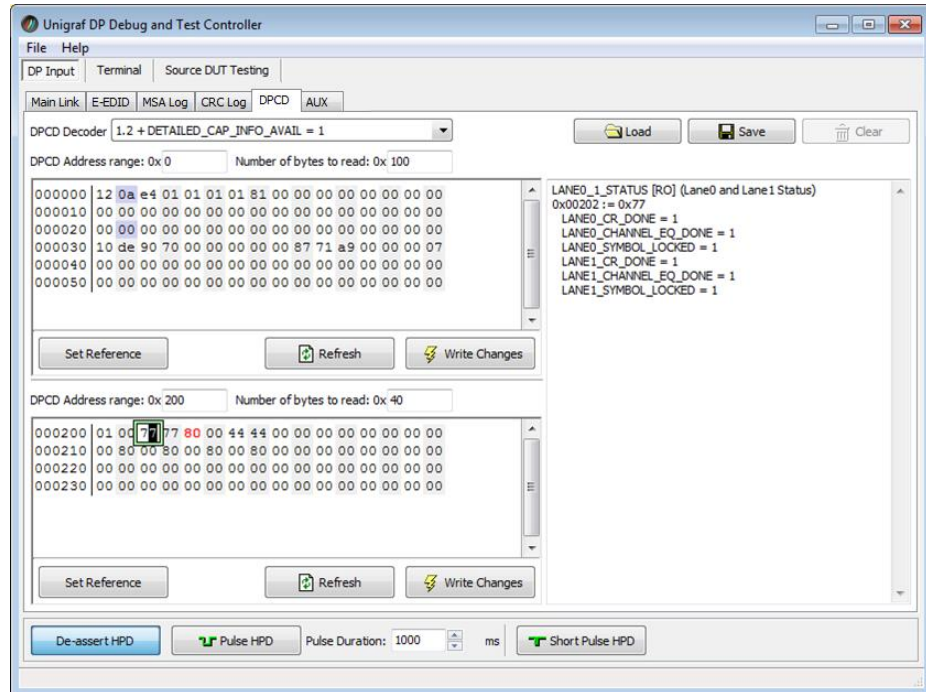
In the combo box above the DPCD Decoder window you can select how the DPCD data is interpreted, either as *DP 1.1 EDID*, or as *DP 1.2 EDID with Detailed Capability Info* selected or not (*DETAILED_CAP_INFO_AVAIL* = 1/0).

- By clicking **Refresh** you can re-read the data from the DPCD registers to the window in question.
- By clicking **Write Changes** you can write the portion of data shown in the window in question to the DPCD registers.

- By clicking **Set Reference** you can store currently shown data as a reference for comparison.

When you refresh the data from the DPCD registers the changed bytes will be highlighted with gray background.

The fields edited by the user will be highlighted with red color.



Saving and Loading DPCD Content

You can save the DPCD data in the address areas that you selected for the two windows as a file in your PC. You can save the content in three alternative formats:

- *Binary DPCD Data File* format (*.DPD). This is Unigraf proprietary format. You can also load the DPCD content stored in this format.
 - *Comma Separated Values* (*.CSV) for loading the data to a spreadsheet.
 - *HEX Dump* (*.HEX) in a human readable text format.
- By Clicking **Save** you will be able to select the location and the format of the file.
 - By Clicking **Load** you can load DPCD data saved in *DPCD Data File* (*.DPD) format to the editor.
 - In order to program the data into the DPCD registers of DPR-120 Local Sink click **Write Changes**.

Note

- Writing DPCD data to the DPCD registers of the DPR-120 Local Sink will potentially affect the status and capabilities of DPR-120 as seen by the upstream source.
- User control like Link Training or mode changes will modify the content of the DPCD registers
- During a reboot of DPR-120 the DPCD registers will be returned to their default values.

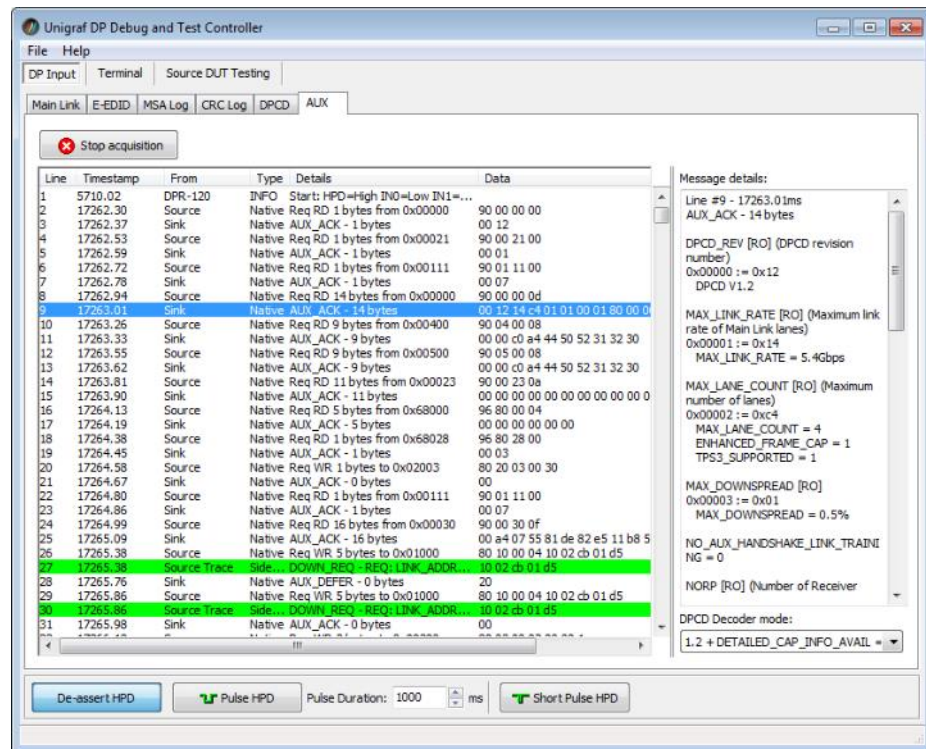
AUX Tab

AUX Tab is an AUX Channel Monitor for recording the AUX Channel traffic in the upstream link. The operation of this built-in AUX Monitor of DPR-120 is in many ways similar to Unigraf's *DPA-400 AUX Channel Monitor*. The advantage of the built-in function is that no extra connectors are used in the signal path that could potentially degrade the quality of the signal.

When acquisition is enabled, the AUX Channel Monitor collects all AUX Channel transaction between the upstream source and DPR-120. Each message is shown in the log dialog as time stamped raw data and also in its parsed form. In order to help the user compare the logged data to the specification, the parsed data is expressed with the same terminology used in VESA DisplayPort™ documentation.

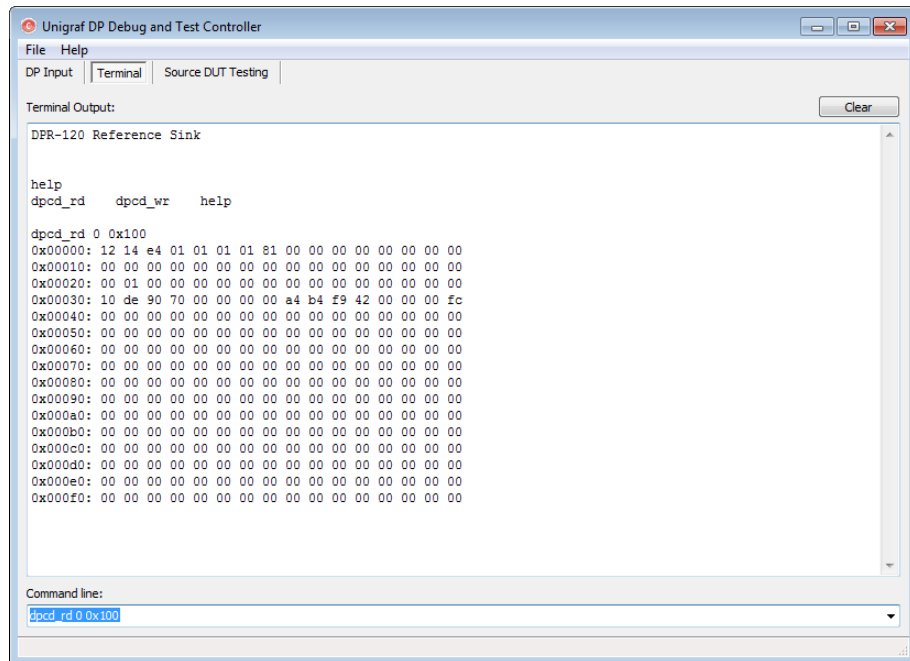
Please refer to a full description of the AUX Channel Monitor features of in chapter [AUX Monitor](#) later in this document

The AUX Monitor function is enabled with *MST Debug Extension* license key.



Terminal

Terminal is a tool for running embedded DPR-120 commands.



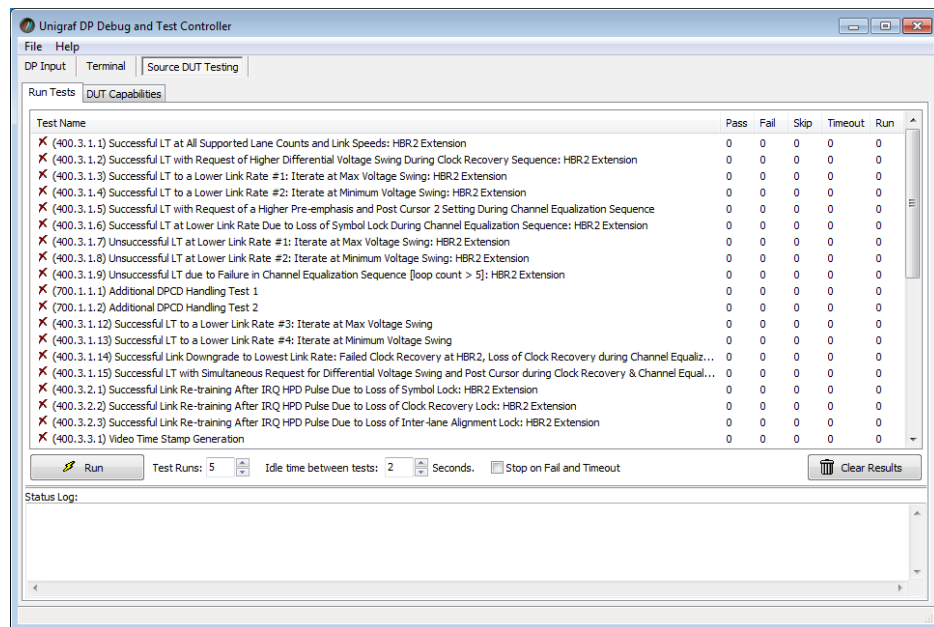
Currently there are three commands

Command	Description
help	List the available commands
dpcd_rd <address> <count>	Read DPCD register content. <address> is the start address; <count> is the number of register locations read. Both values are decimal by default, please use 0x prefix for hex.
dpcd_wr <address> <value>	Write <value> to DPCD register <address>. Both values are decimal by default, please use 0x prefix for hex.

Click **Clear** to clear the *Terminal Output* panel.

Source DUT Testing

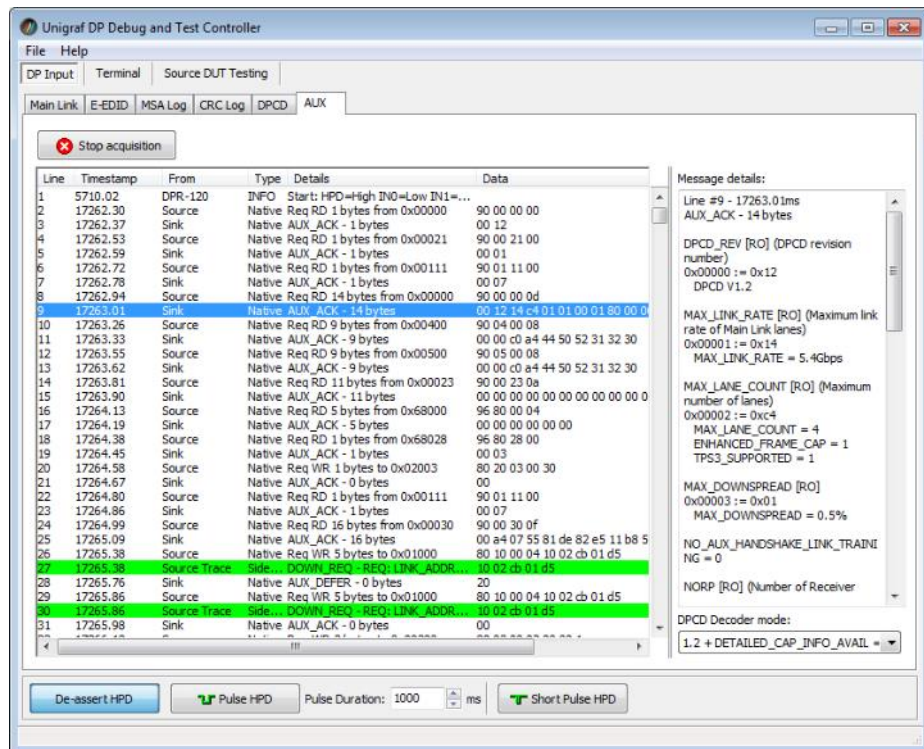
Source DUT Testing section is the GUI to run the compliance tests with DPR-120. Please refer to a full description about the CTS Test GUI features in chapter [Running Compliance Tests](#) later in this document



5. AUX CHANNEL MONITOR

The AUX Tab

The tab has two dialogs. The **Transaction list** in the left displays the acquired AUX channel transactions and events. The **Message details** panel on the right side of the tab shows the parsed interpretation of the currently selected AUX channel transaction line. The **Start acquisition** / **Stop acquisition** button controls collection of the data.



Decoding the Data

The AUX Monitor is compatible with both DisplayPort™ versions 1.1b and 1.2. With **DPCD Decoder mode** in the lower right hand corner of the dialog you can select which version is used and how the messages will be decoded.

The options are

- DPCD 1.1 Decoder
- DPCD 1.2 Decoder DETAILED_CAP_INFO_AVAILBLE bit set =1
- DPCD 1.2 Decoder DETAILED_CAP_INFO_AVAILBLE bit set =0

Inspecting the Acquired Data

Data Lines

The data is organized in lines, each numbered starting from 1 and marked with a timestamp. There are five kinds of data:

Information

Identified by the text “INFO” in their Type column, they provide some useful information like the time acquisition has started and stopped or the logical state of the inputs, etc.

Transactions

Identified by the text “Native” or “I2C” in their Type column, they report an AUX channel data transfer, either a data Request or a data Reply.

Events

Identified by the text “Event” in their Type column, they signal the state change in one or more of the monitored inputs.

Sideband Channel Messages

The Isochronous Transport Service uses the sideband communications over sideband channel (AUX CH and HPD) for the management of topology/virtual channel connection/Main Link and performs Main Link symbol mapping.

Error

A line Type reading “Error” marks the detection of an illegal AUX channel data packet. An irregular start condition, an irregular stop condition or transfer of a number of bits which is not a multiple of 8 are all conditions that cause an error line.

Columns

The data on each line is ordered in columns. Each column provides additional information about the data, facilitating its viewing and interpretation:

Line

This column displays the line number, starting from 1, and cannot be hidden.

Timestamp

Each line is identified by its timestamp, marking the instant when an event or error was detected, or when a data transaction got started. The timestamp can be displayed as a time delay from the start of the acquisition (absolute) or from the previous line (relative). The timestamp can be displayed in milliseconds or in minutes, seconds and microseconds.

From

This column indicates the originator of the data line:

- “**Source**” and “**Sink**” for an AUX channel transaction, respectively a data Request and a data Reply.
- “**Source Trace**” and “**Sink Trace**” respectively for Sideband Message data Request and Reply.
- “**DPR-120**” for error and information lines.
- “**Unknown**” for signal state change events.

Type

This column provides additional information about the type of the line:

- “**Native**” marks Native AUX channel Requests and Replies.
- “**I2C**” marks I2C AUX channel Requests and Replies.
- “**Sideband Request**” and “**Sideband Reply**” to mark the Sideband Channel messages
- “**Event**” is used for signal state change events.
- “**INFO**” is used with information lines.
- “**Error**” is used for illegal conditions detected on the AUX channel.

Details

This column contains a condensed description of the line content.

Data

The binary data exchanged during AUX channel transactions, in hexadecimal notation.

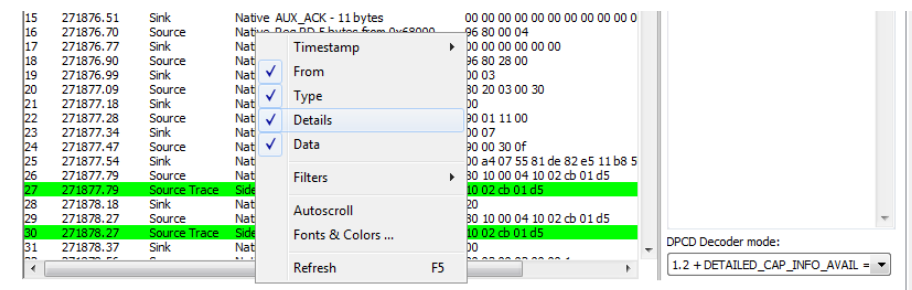
Message Details

The *Message details* panel is used to provide a detailed, parsed explanation of the line currently selected in the *Transaction list*. For AUX channel transaction data, for each of the DPCD memory locations affected, the panel lists:

- All data bytes read or written.
- All DPCD memory locations affected.
- The name of the locations and of each of their bit fields.
- All bit field’s numeric and binary values, together with their decoded value.
- The Replies outcome (AUX_ACK, AUX_NACK, I2C_DEFER, etc.).

Selecting Columns in the Transaction List

You can customize the *Transaction list* by clicking the right button of your mouse over the list. From the pop-up menu, you can choose which columns to display in the list.



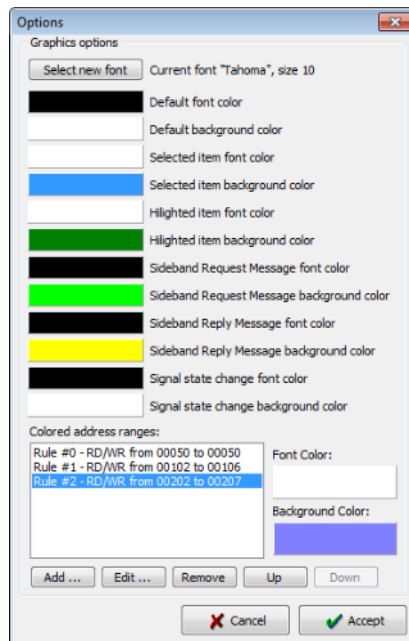
Selecting Font and Colors of the Transaction List

Click the right button of your mouse over the transaction list, and in the pop-up menu, click **Fonts & Colors ...** to open the *Options* dialog. In the dialog click **Select new font**. You can now select the font style, color and size used for displaying the *Transaction list* and the *Message details*.

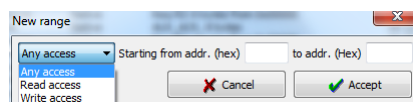
Coloring DPCD Address Ranges

In order to improve the readability of the *Transaction list*, you can mark the AUX channel transactions where a certain DPCD register address or address range is accessed with a color of your choice.

Click the right button of your mouse over the transaction list, and in the pop-up menu, click **Fonts & Colors ...** to open the *Options* dialog. In the lower part of the dialog click **Add ...** to open the *New range* dialog.

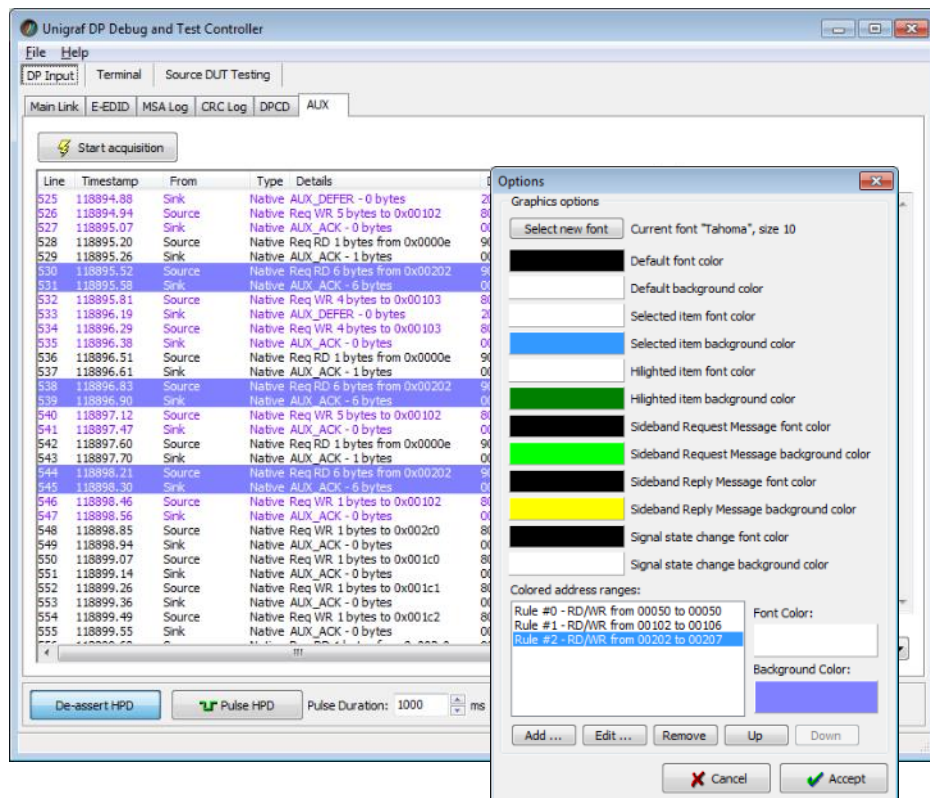


In the *New range* dialog select the access type, start address and end address of the range that you want to be colored. Click **Accept**.



Select the range you just created from the Colored addresses ranges list and click the **Font Color** and **Background Color** buttons to select the colors desired.

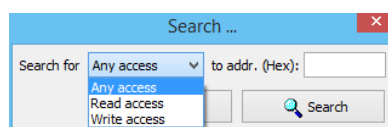
You can create multiple simultaneous coloring rules to help you get a better at-a-glance view of the data captured. Please see an example on the next page.



Searching for Data in the Transaction List

You can search and highlight lines in the *Transaction list* representing access to a selected DPCD location. Press **Ctrl + F** to open the search dialog and select the access type and the DPCD location address that you want to search.

The first occurrence of the found access is selected and the rest are highlighted.



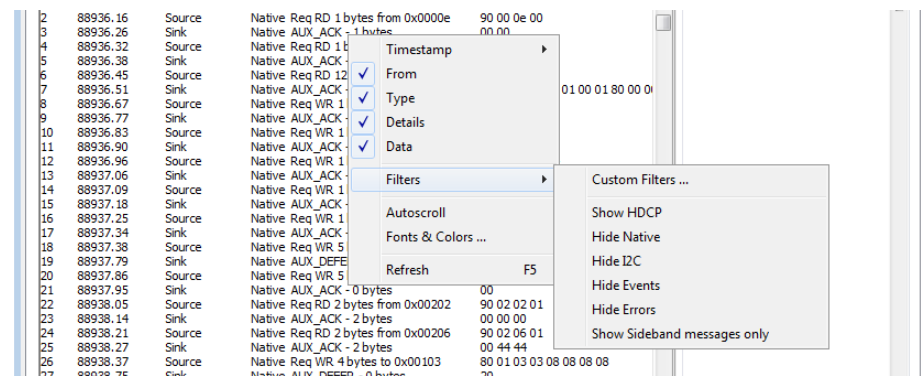
You can use the same search criteria and search again by pressing **F3**.

Filtering Data in the Transaction List

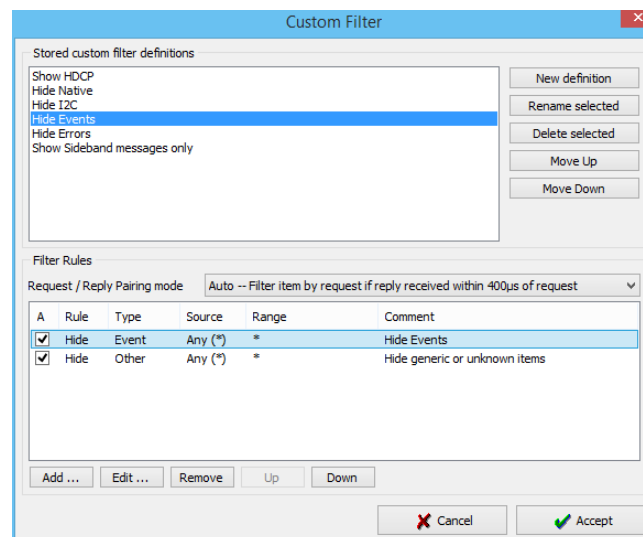
By right-clicking on the dialog and selecting **Filters** you can set up rules describing which data lines are shown in the Transaction List. You can choose the data based on:

- The type of data line
- The origin of the message
- The DPCD address range

In the *Filters* drop down menu you can find by default a set of pre-programmed filters.



The *Custom Filter* dialog provides you a possibility to add and modify new filters. The pre-programmed filters are listed in the dialog. You can copy their structure as bases of your custom filters. It is advisable not to modify the pre-programmed filters



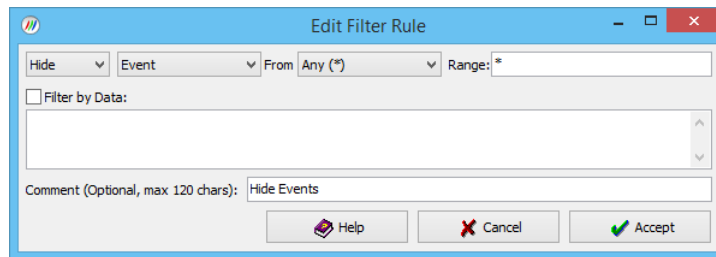
directly but make copies of them.

In the *Stored custom filter* definitions panel you will have the list of currently defined Filters. On the right hand side buttons you can define new Filters, rename or delete them. You can also reorder their appearance in the *Filters* pull-down menu.

In the *Filter Rules* panel lower in the dialog you can review and change the *Rules* in the selected *Filter*. By clicking **Add...** you can create new rules, clicking **Edit...** you can review and edit existing Filters and by clicking **Remove** from the Filter definition.

When you click Add... or Edit... *Edit Filter Rule* dialog opens. In the dialog you can in detail define the action of the rule, select the event and the event details.

You can get help by clicking **Help**. The “Help” text is attached to Appendix C of this document.



Note	Please note that Filters are a very powerful tool. They can however unintentionally hide valuable data from you. Please be careful when applying custom filters. A good practice is to start from an existing filter and gradually add new rules while testing their performance.
------	---

Note	Filtering and selecting the columns for display do not affect the actual data acquisition. All transactions and their full data are always captured.
------	--

Saving Recorded Data

After the acquisition is stopped, the data displayed in the *Transaction list* can be saved as a binary file or as a report in a readable HTML or CSV format. In its binary form, the saved data can only be opened by the *AUX Monitor* feature of DPR-120 or by using Unigraf *DPA-400 GUI*. The HTML format can be opened with any available HTML browser, the CSV (Comma Separated Values) format can be opened with various text editing and spreadsheet tools.

Saving to a Binary File

From the top pull down menu select **File -> AUX Log as ...** and specify the name for the file to be saved. You can reload a previously saved file for later inspection using **File -> Open AUX Log**

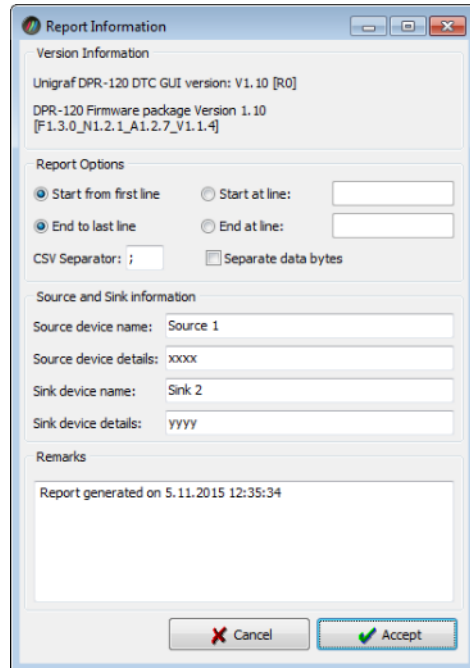
Creating a Test Report

The *AUX Monitor* includes a report generator that creates a test report of the results displayed in the Results Grid.

The report generated by the GUI application includes all the lines from the *Transaction list* and the content of the *Message details* panel for each of them. You can also include detailed description of the monitored source and sink and the used TE in the report.

For creating a report select from the pull down menu **File -> Save AUX Report as** You can choose either a HTML or CSV format.

After selecting the report file name, in the *Report Information* dialog you can add a description of the monitored source and sink devices, and your personal remarks that will be included in the report.



Save the report by clicking **Accept** or return to the main window without saving by clicking **Cancel**. After the report is saved, your default internet browser will be opened to display the report file created.

The information entered in the dialog fields will be available also for the following reports until the GUI is closed.

Note	You can create reports from previously acquired data that has been saved in binary format. Use first File -> Open AUX Log ... and then File > Save AUX Report as
------	---

Note	Report creation for large amounts of acquired data can generate large HTML files and take several minutes. During this operation the GUI will not respond to user commands. Please, be patient.
------	---

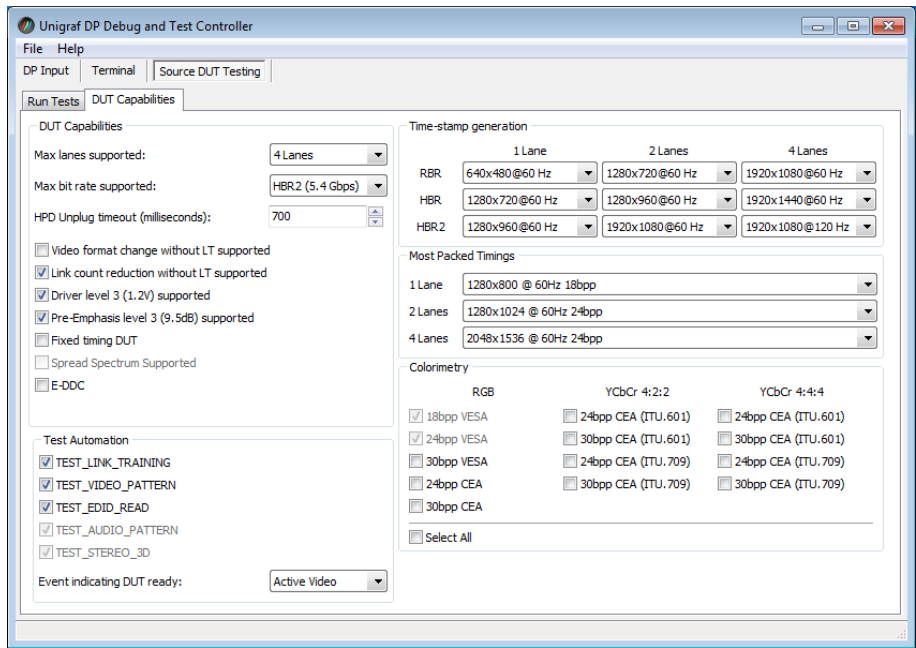
6. RUNNING COMPLIANCE TESTS

DP Link Layer CTS test capability is a separate add on to DPR-120 Debug and Test Controller GUI. The tests are included in the GUI, all you need to have is the license code to enable them.

In order to get details of the content of each individual *CTS Test Product* please refer to document [Guide to Unigraf DP CTS Tool Options](#). If you have any additional questions, please contact Unigraf or your local representative.

DUT Capabilities

Before running the tests you have to define the capabilities of the Source DUT for the test engine. This is done in **Source DUT Testing > DUT Capabilities** tab.



The capabilities listed on the tab are explained in detail in chapter 3 *Compliance Test Operation* of document *VESA® DisplayPort® Link Layer Compliance Test Specification: Extension Set 1*.

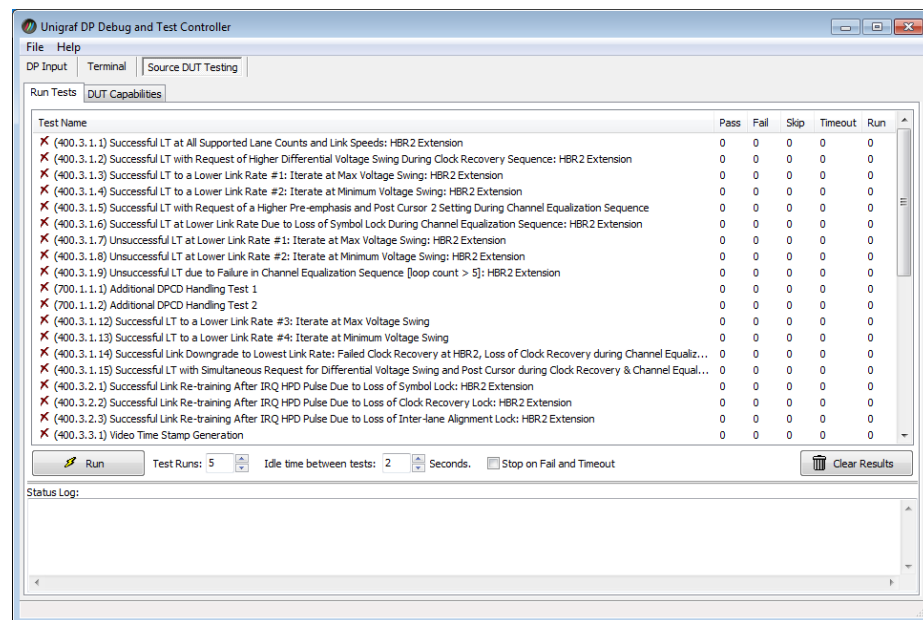
Note Please make sure that the capability tables are completed before running the tests. The result of the test might be misleading if the DUT capabilities and the table do not match.

You can save the settings stored in the *DUT Capabilities* tab by selecting **File > Save CTS Settings** You can retrieve saved settings by selecting **File > Open CTS Settings**

Running CTS Tests

The **Source DUT Testing > Run Tests** tab lists the tests enabled with the *CTS Test Product* enabled in your Debug and Test Controller (DTC) GUI. The test name and the reference number refer to the applicable *VESA® DisplayPort® Link Layer Compliance Test Specification*. The GUI and the related FW on DPR-120 implement the test according to the specification in question. Please refer to the VESA Specification for detailed description of the procedure of the test.

For running a test, select the test with your mouse and click **Run**. For selecting multiple tests hold down the **Shift** key of your keyboard while selecting the tests.



Below the list of tests you can select how many times the selected tests are performed and the time between the tests. When repeating a sequence of tests, all selected tests are performed in each repetition. E.g. when you repeat tests 1, 2 and 3 two times, the sequence is: 1, 2, 3, 1, 2, 3.

If the DUT needs time to recover after the completion of the test, you can include a pause after a test is completed and before the start of the next test. This is done in **Idle time between tests** field. The minimum time is 2 seconds.

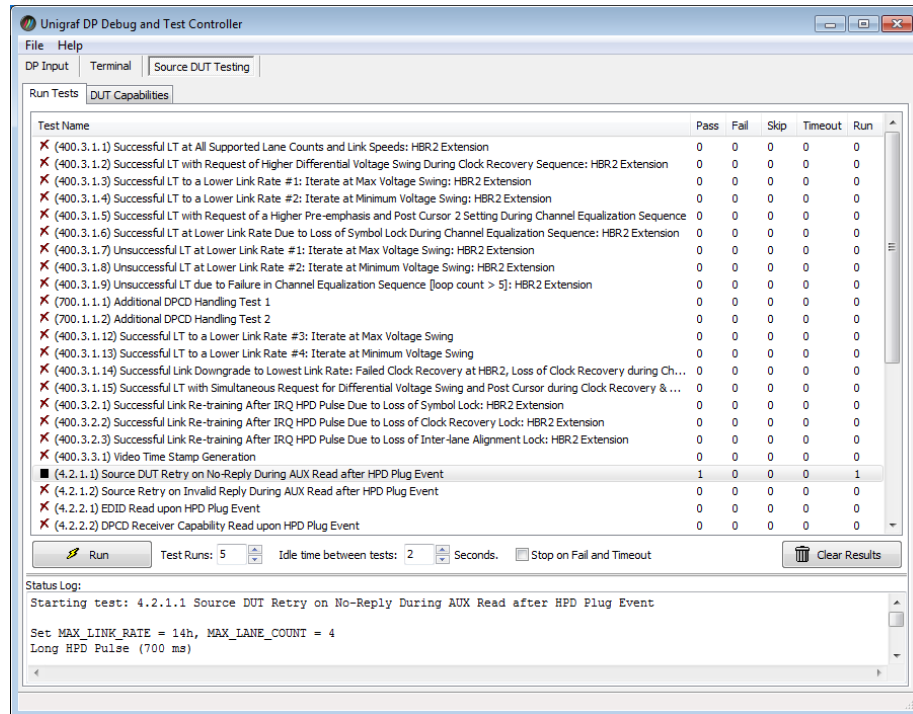
If you have programmed a series of test to be run, you might want to stop the execution if a failure or timeout occurs. Please check the **Stop on fail and Timeout** box.

For clearing the Status Log and the Results matrix, click **Clear Results**.

Evaluating CTS Test Results

The test procedure advancement is defined in the *Status Log* panel. It describes the steps of each individual test in the way defined in the corresponding VESA Compliance Test Specification. Please use the Status Log and the Specification side by side when interpreting the results.

At the completion of each test the result of the test is indicated in the matrix on the right hand side of the test panel. For each test the matrix lists the number of occurrences of each result and the number of tries performed.

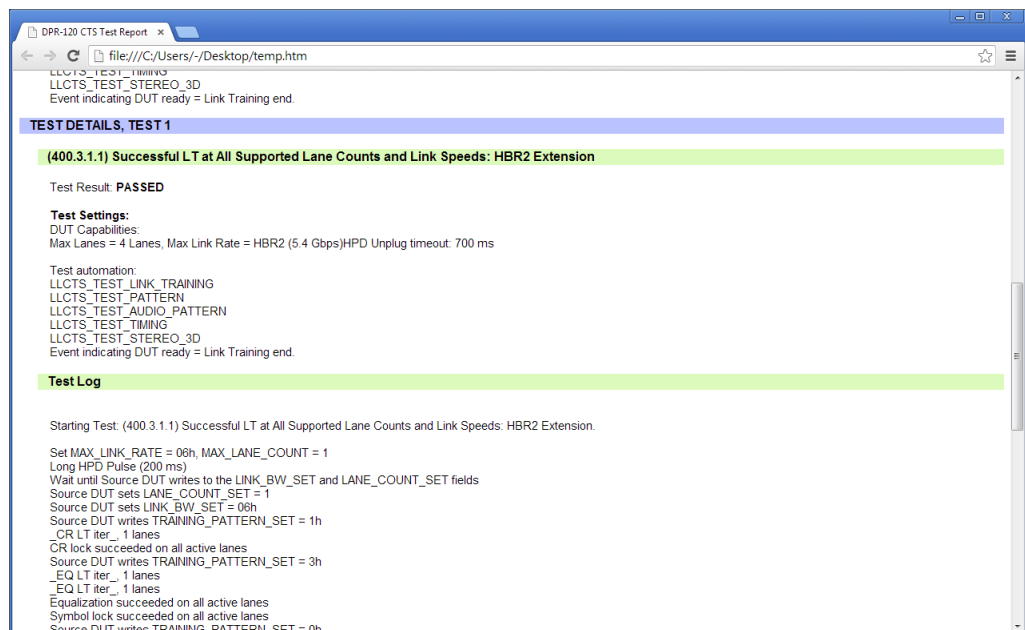


Creating a CTS Test Report

You can save the test results as a report in HTML format. Select **File > Save Report ...** A dialog will open where you can insert information about the DUT and remarks about the test. Details of the used test equipment and the software and firmware version will be added automatically.

Viewing the CTS Test Report

The report file can be viewed with any HTML browser. The report has built-in views for Report Summary, Test Summary, view of individual tests and view of all information.



APPENDIX A. PRODUCT SPECIFICATION

DPR-120

Input	1 x DisplayPort™ HBR2 and MST compliant Rx, ST Microelectronics STDP9320 controller (DP In)
Outputs	1 x DP 1.2 multi stream Tx (DP Out) 1 x DP 1.1 compliant preview monitor (Monitor Out) S/PDIF coaxial audio monitor TRS headset audio monitor
Resolutions	4096 x 2160 input & pass through 2560 x 1600 preview
Audio	Up to 2 LPCM channels at 192 kHz, 24-bits or multi-channel compressed (AC3, DTS, etc) compliant with IEC60958 / IEC61937
Control	USB 2.0 interface
Software	Debug and Test Controller GUI Test Automation Shell (option) DP RefSink CTS LL Extensions (option)
Power supply	AC/DC Power supply (100 to 240 Vac 50/60 Hz input, +5 Vdc output)
Mechanical Size	230 x 168 x 56 mm
Weight	0.9 kg w/o power supply

All specifications are subject to change without notice.

APPENDIX B: TEST AUTOMATION SHELL

Test Automation Shell (TA Shell) is a license enabled optional feature for DPR-120. It enables the user to create simple automated test routines. All functions that are in the DTC GUI can also be accessed through the TA Shell.

```

DPR-120 Shell, V1.9 [R0], (C) 2014, Unigraf Oy. All Rights Reserved.
DPR-120 Shell, V1.9 [R0], (C) 2014, Unigraf Oy. All Rights Reserved.
Entering interactive mode ...

Enter 'HELP' for instructions.
Base > open 1
Searching devices ...
1 Devices found:
- Device ID [1]: DPR-120 [1350C369], Serial 1350C369
Device DPR-120 [1350C369] Opened.
Device version:
Firmware package Version 1.9
[Pi 3.0 M1.2.0 M1.2.0_01.1.4]
Loaded 2 licenses.
DPR-120 [1350C369] > DPIN Status
Clock Recovery      [XX] [XX] [XX] [XX]
Symbol Lock         [XX] [XX] [XX] [XX]
Channel equalization [XX] [XX] [XX] [XX]
Voltage Swing <mVpp> 400  400  400  400
Pre-Emphasis <dB>    3.5  3.5  3.5  3.5
LaneCount = 4
FrameMode = Enhanced
MST = Enabled
Linkrate = HBR2
Scrambling = Enabled
DPR-120 [1350C369] > _
  
```

Please find below a quick list of TA Shell commands. For full description of each command, please refer to *Shell_User_Manual.pdf* included in the DPR-120 Release Package.

```

Help <topic> [...]
Exit
Open <Device ID>
List
Close
CLS
Run <DOS_Command>

License add <key>
License list
License remove <key-index>
License save
License load

DPIN HPD <Operation>
DPIN Linkconfig show
DPIN Linkconfig <Lane_count> <Speed> <MST> <TPS3>
DPIN DPCD Read <Address> [Length]
DPIN DPCD Write <Address> <Data1> [Data2]
DPIN DPCD Save <Target-file> <Address> [Length]
DPIN DPCD Load <Source-file>
DPIN Status
DPIN Streams

SINK EDID Load <Source-file>
SINK EDID Save <Target-file>
  
```

```
DPMON Select <Stream_Index>
DPMON Read <Data_ID>
DPMON Log Start <Data_ID> <Target_File>
DPMON Log Stop <Data_ID>

CTS List
CTS Config load <config_file>
CTS Config save <config_file>
CTS Config show [conf_entry]
CTS Config Link <Max-lanes> <Max-rate> <HPD Timeout>
CTS Config flags <'+'|'- '> <Flag1> [Flag2] [...]
CTS Config ta_flags <'+'|'- '> <Flag1> [Flag2] [...]
CTS Config ready_event <Event>
CTS Config timestamp <BitRate> <Lanes> <ResolutionID>
CTS Config most_packed <ResID1> <ResID2> <ResID4>
CTS Config colorimetry <'+'|'- '> <CL_ID1> [CL_ID2] [...]
CTS Run <Test_Index>

Proceed
Pass
Fail
Abort

CTS Report DUT_Model <String>
CTS Report DUT_Revision <String>
CTS Report DUT_FW <String>
CTS Report DUT_Serial <String>
CTS Report DUT_Driver <String>
CTS Report Tester <String>
CTS Report Remarks <String>
CTS Report show
CTS Report save <Target_File>
```